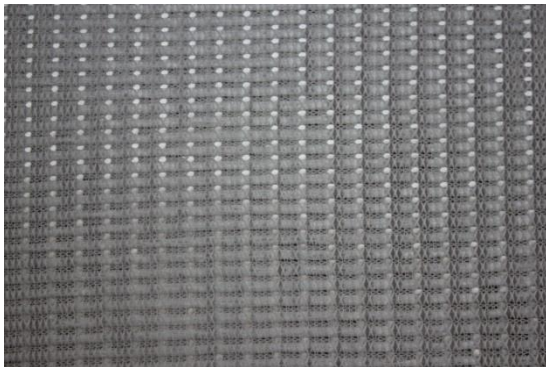


Technical Data Sheet

Woven geotextile «GRUNTSTAB»



Woven geotextile «GRUNTSTAB» – is a material made by textile technology (weaving and knitting) of high modulus polyester yarns.

Woven geotextiles are used in climatic regions with a temperate and cold climate; the temperature regime of operation is from minus 60 C to plus 70 C, in soils with a pH value of pH from 4 to 10.

Typical application:

- reinforcement of weak bases in the construction of roads and railways, oil and gas terminals, airfields, car parks, high load sites, construction sites;
- separation of structural layers and pavement bases during the construction of roads;
- strengthening of soils during hydraulic engineering construction, erection of dams, breakwaters, breakwaters;
- strengthening landfills for household and industrial waste;
- separation of layers to enhance the main platform of the subgrade of railways;
- construction of reinforced ground structures.

Physical and mechanical properties

Property	Unit	GRUNTSTAB 100/50	GRUNTSTAB 120/120	GRUNTSTAB 150/45	GRUNTSTAB 200/45	GRUNTSTAB 300/45
Surface weight	g/m ²	≥265	≥415	≥340	≥430	≥600
Tensile strength						
warp	κN/m	≥100	≥120	≥150	≥200	≥300
weft	κN/m	≥50	≥120	≥45	≥45	≥45
Elongation at break at maximum load						
warp	%	≤13	≤13	≤13	≤13	≤13
weft	%	≤13	≤13	≤13	≤13	≤13
Standard roll width	cm	500 ± 7				
Standard roll length	m	100				

Regulatory documents:

- STO 00205009-017-2018

STEKLONIT JSC Tramvaynaya 15, Ufa, 450027. Tel.: +7 347 293-76-00

Moscow office Profsoyuznaya 23, Moscow, 117997. Tel.: 8 800 500 07 22.

Web-site: www.steklonit.com, **e-mail:** info@steklonit.com